

PART OF N.E. 1/4, SEC. 7, T.5N., R.2W., S.L.B. & M.
LAKE SIDE ACRES SUBDIVISION

147

TAXING UNIT: 110, 146

IN WEBER COUNTY

PREFIX: 08 - 147

LOTS 1 - 24

SCALE: 1" = 100'

NORTH 1/4 COR. OF SEC. 7,
 T.5N., R.2W., S.L.B. & M.

N.E. COR. OF SEC. 7,
 T.5N., R.2W.,
 S.L.B. & M.

EAST 2711.55'
 4000 SOUTH STREET

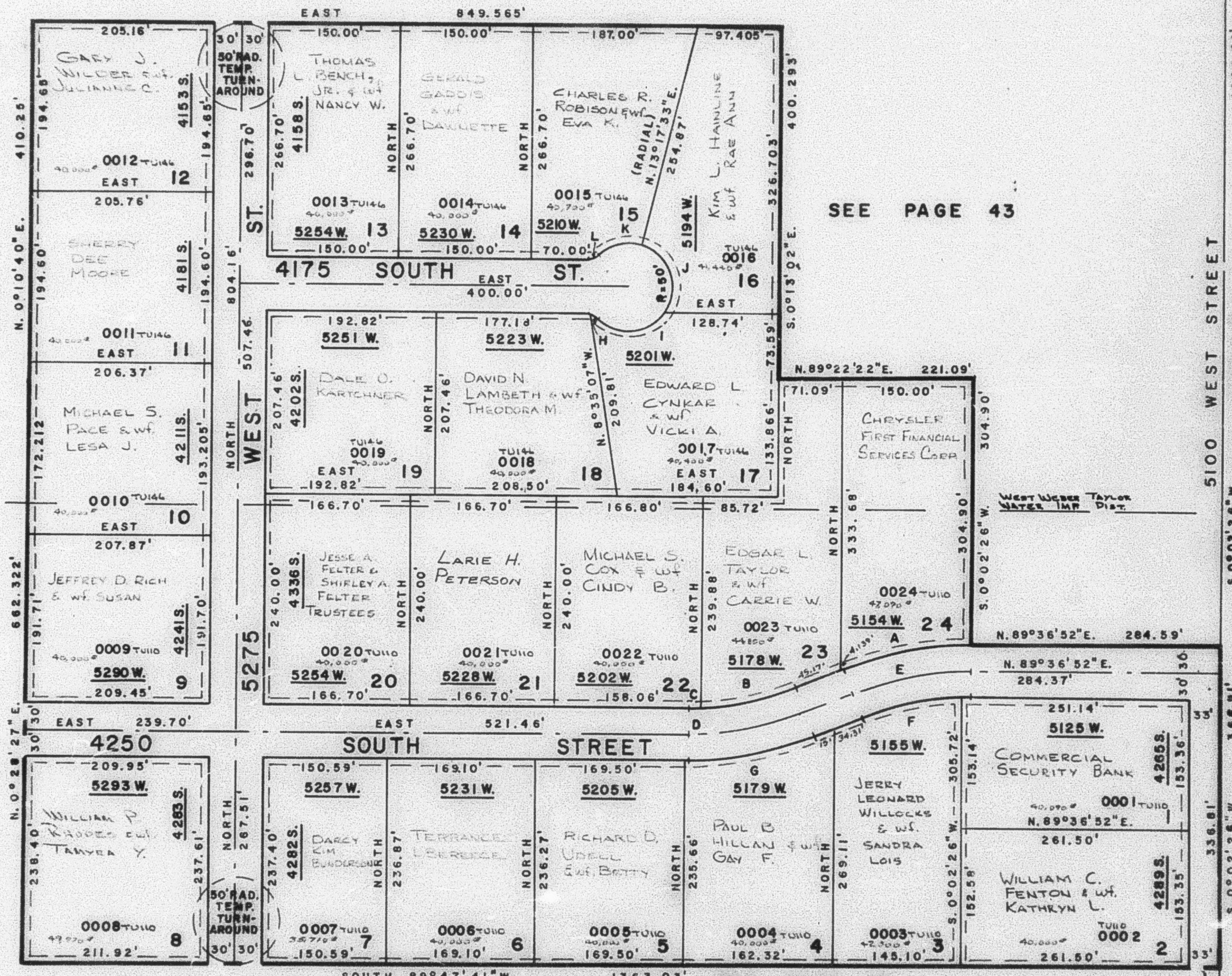
SEE PAGE 43

SEE PAGE 44

SEE PAGE 43

SEE PAGE 43

SEE PAGE 48



CURVE DATA

A	B	C	D	E	F
Δ = 21°36'52"	20°28'59"	1°31'01"	22°00'	1°36'52"	19°51'02"
R = 396.70'	330.12'	330.12'	360.12'	366.70'	336.70'
L = 149.65'	118.02'	8.74'	138.27'	138.34'	116.85'
T =			70.00'	70.00'	

G	H	I	J	K	L
Δ = 22°00'	46°11'13"	99°19'01"	113°34'39"	59°28'46"	46°11'13"
R = 390.12'	15.00'	50.00'	50.00'	50.00'	15.00'
L = 149.79'	12.09'	87.67'	99.12'	51.91'	12.09'

NOTE: ALL EASEMENTS ARE 7'
 UTILITY & DRAINAGE
 EASEMENTS

EAST 1/4 COR. SEC. 7,
 T.5N., R.2W., S.L.B. & M.

FOR COMPLETE ENG. DATA SEE
 ORIG. DED. PLAT IN BK. 21, PG. 15